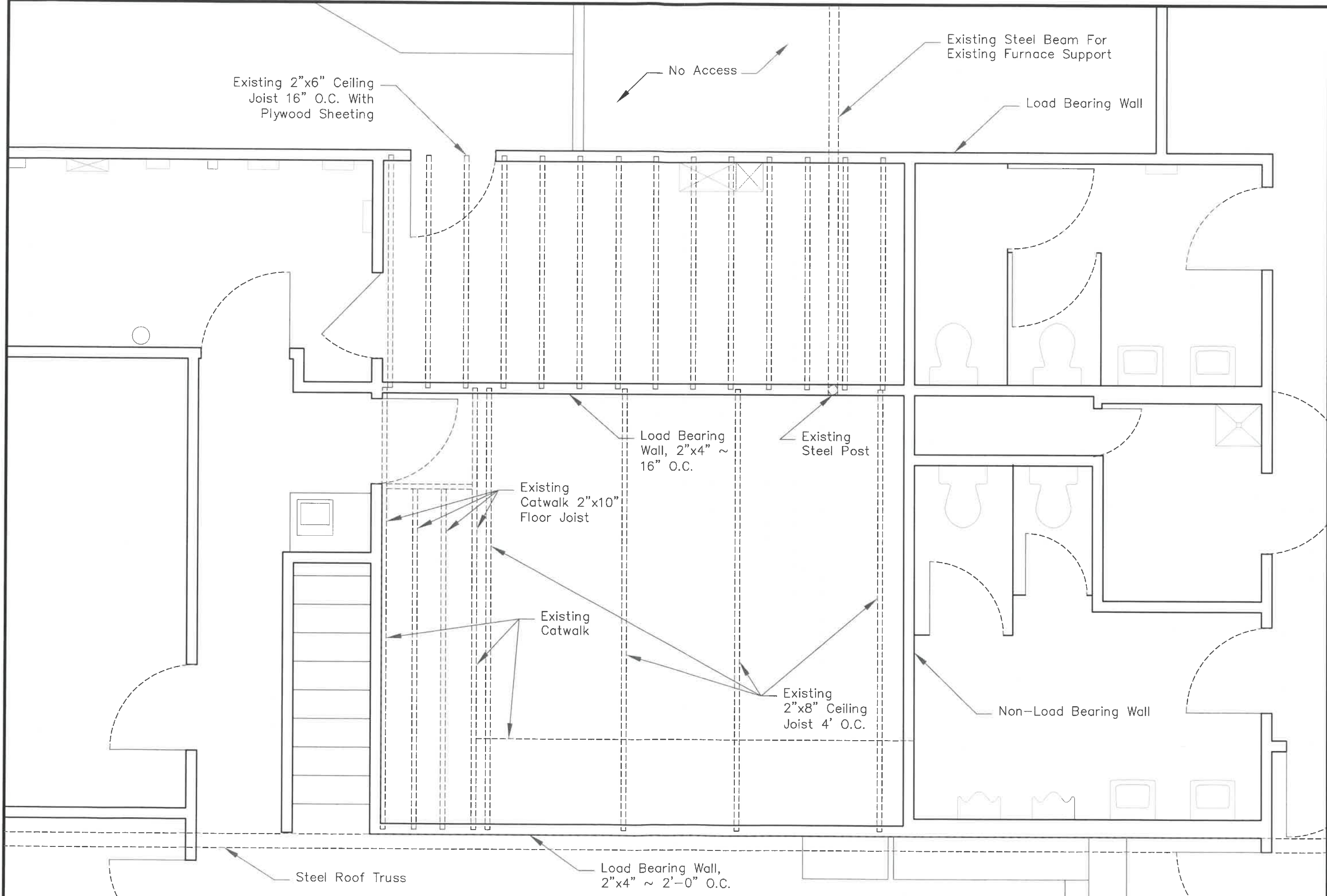



Proposed Area Of Renovation

**CODE DATA**  
 User Group: B  
 Construction: IIB Unlimited  
 Area Of Building: 10,664 sq. ft.  
 Occupant Load: 106

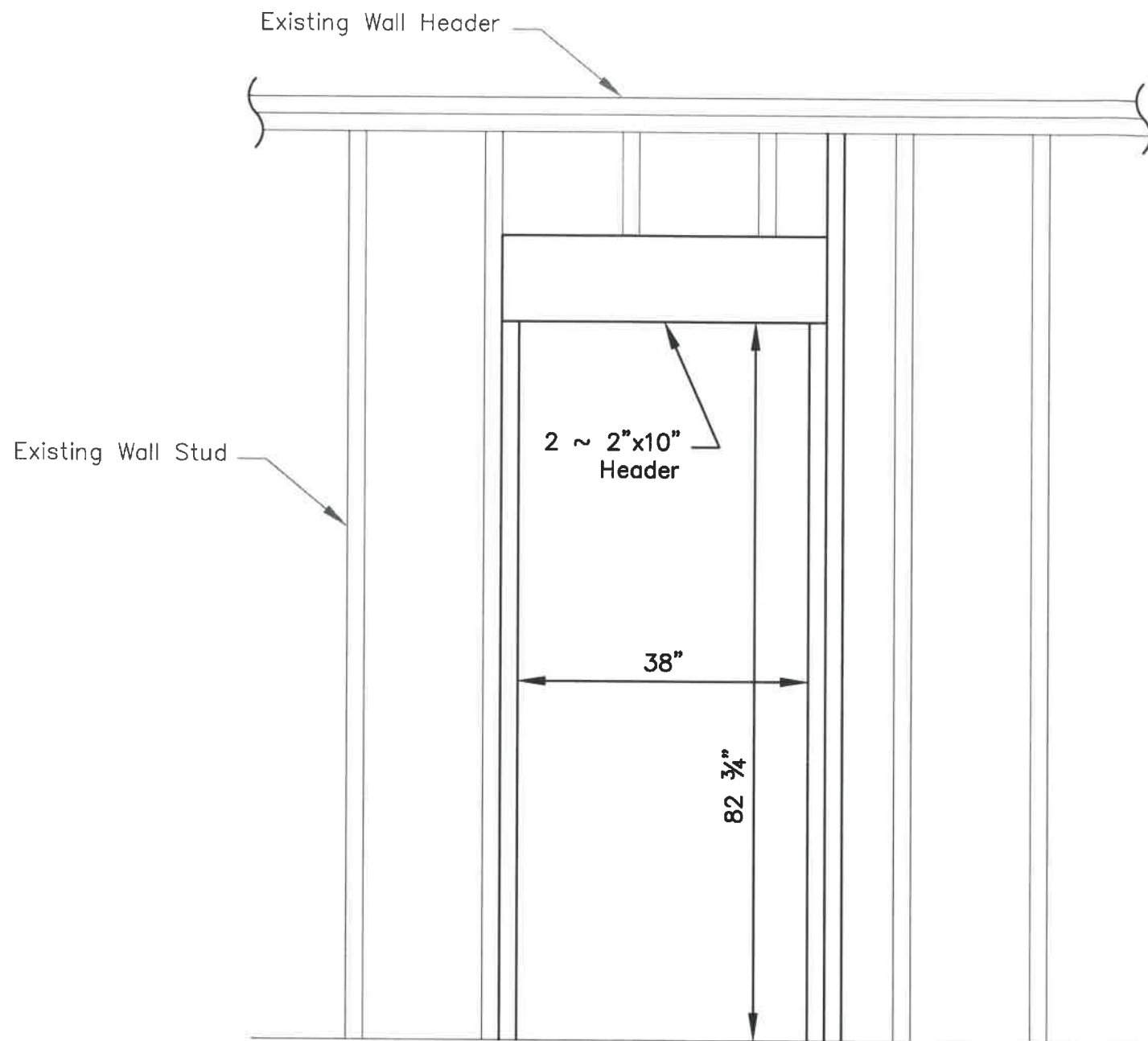
*255 W. Riverview*

Created: 3/8/12	Plotted: 9/5/12	Scale: 1"=10'	City of Napoleon Engineering Department 255 West Riverview Avenue Napoleon, Ohio 43545 Phone: (419) 592-4010 Fax: (419) 599-8393
Drawn: Mark B. Spies	Approved: Chad E. Luffs	City of Napoleon Engineering Department 255 West Riverview Avenue Napoleon, Ohio 43545 Phone: (419) 592-4010 Fax: (419) 599-8393	Plans Prepared By: City of Napoleon Engineering Department Chad E. Luffs, P.E., P.S. Director Of Public Works
Drawing Name: Prop Eng Office 01 Location.dwg	Sheet 01 Of 06	City of Napoleon Municipal Building Proposed Engineering Office Addition Location	No. _____ Date _____ Revision _____ Chd. By _____



Created: 5/25/12	Plotted: 9/6/12	Scale: 1"=3'	Chkd. By:
Drawn: Mark B. Spleiss	Approved: Chad E. Lulfs		Revision:
Drawing Name: Prop Eng Office 02 Overhead.dwg			Date:
			No.:
<b>City of Napoleon Municipal Building</b> <b>Proposed Engineering Office Addition</b> <b>Existing Overhead</b>			Plans Prepared By: City of Napoleon Engineering Department Chad E. Lulfs, P.E., P.S. Director of Public Works
City of Napoleon Engineering Department 255 West Riverview Avenue Napoleon, Ohio 43545 Phone: (419) 592-4010 Fax: (419) 599-8393			
Sheet 02 of 06			





Header Detail For  
Standard 36" Door

Door Notes:

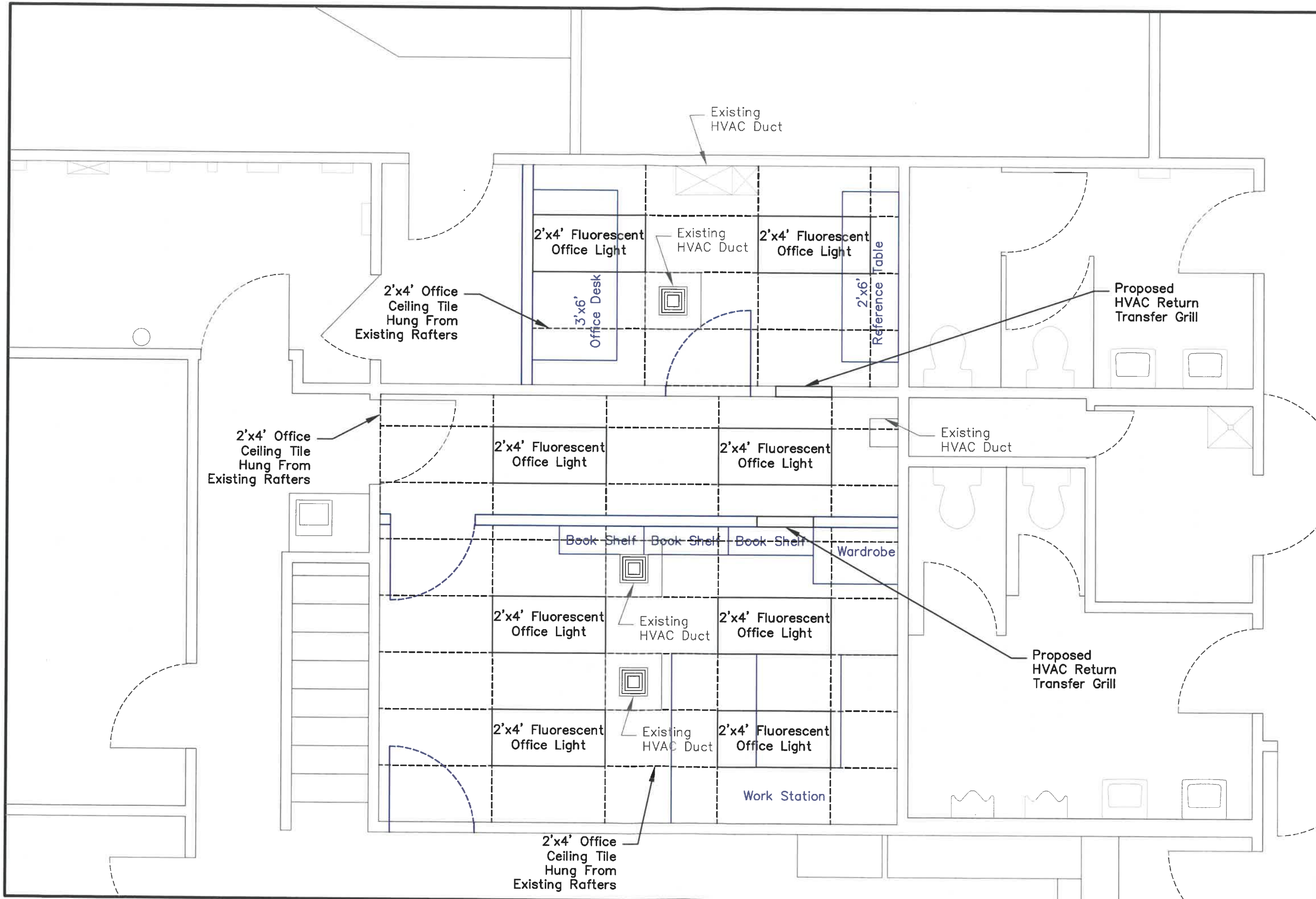
Door types are to be 3'-0" x 6'-8" x 1 3/4" thick, flush solid core wood door, polyurethane, 16 ga. x 2" x 5 3/4" hollow metal frame. Finish: field paint.

All hardware to be finish satin chrome 2D. Master key schedule shall be as directed by owner. Hinges © H.M. Doors: McKinney Sales #TA-TB2314 4 1/2" x 4 1/2" or equaled by Yale, National Hager, or Stanley. Hinges prehung by manufacturer.

Lockset: (Lever handle) Sargent 10G05LL or equalled by Kwikset, Yale, Schlage, or Russwin.

All items to be verified by contractor with owner, prior to installation.

Created: 5/29/12	Plotted: 9/6/12	Scale: N.T.S.	Chid. By:
Drawn: Mark B. Splees	Approved: Chad E. Lulfs		
Drawing Name: Prop Eng Office 04 Details.dwg			
<b>City of Napoleon Municipal Building Proposed Engineering Office Addition Details</b>			
City of Napoleon Engineering Department 255 West Riverview Avenue Napoleon, Ohio 43545 Phone: (419) 592-4010 Fax: (419) 599-8383			
Plans Prepared By: City of Napoleon Engineering Department Chad E. Lulfs, P.E., P.S. Director of Public Works			
No.	Date	Revision	



Created: 6/5/12	Plotted: 9/6/12	Scale: 1"=3'	Chad E. Luifs
Drawn: Mark B. Spless	Approved: Chad E. Luifs		
Drawing Name: Prop Eng Office 05 Ceiling.dwg			
<b>City of Napoleon Municipal Building Proposed Engineering Office Ceiling Grid</b>			
City of Napoleon Engineering Department 255 West Riverview Avenue Napoleon, Ohio 43545 Phone: (419) 592-4010 Fax: (419) 599-8393			
Plans Prepared By: City of Napoleon Engineering Department Chad E. Luifs, P.E., P.S. Director of Public Works			
No.	Date	Revision	Chgd. By

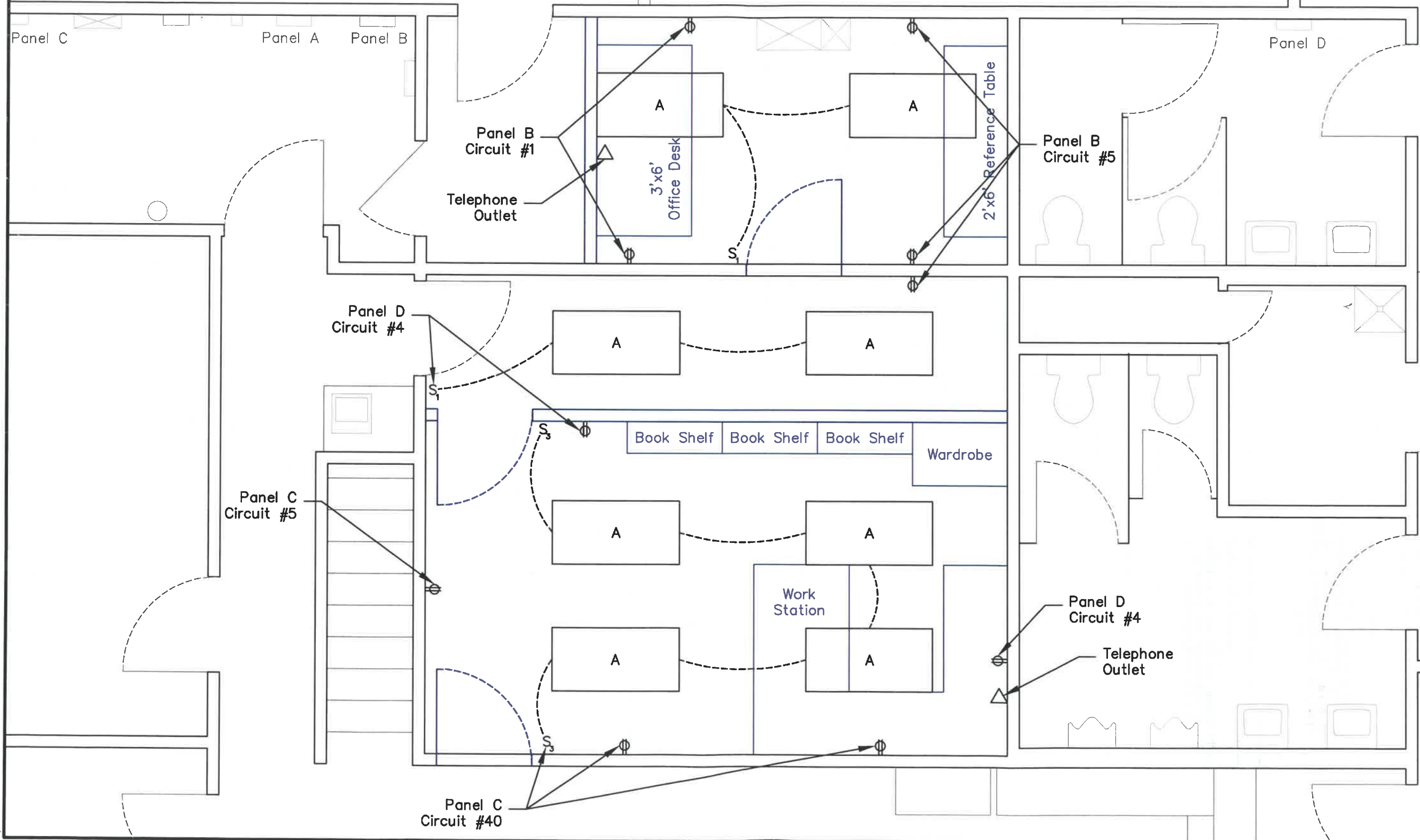
**ELECTRICAL LEGEND**


S, S Wall Switches, Single Pole And 3-Way, Hubbel (Or Equal).

⊕ Duplex Receptacle (Wall Mounted), Hubbel (Or Equal).

△ Telephone Outlet - Provide 3/4" Conduit To Above Ceiling.

A Vaportight Industrial Light Fixture, One Piece Reflector With White Enamel Finish and 4 - 28 Watt T8 Flourescent Lamps, 120 V., Lithonia #FHE 428T5L 1/2 (Or Equal).



Created:	5/25/12	Plotted:	9/6/12	Scale:	1"=3'
Drawn:	Mark B. Spless	Approved:	Chad E. Luffs	City of Napoleon Municipal Building Addition Proposed Engineering Office Addition Existing Electric	
Drawing Name:	Prop Eng Office 06 Elec.dwg				
City of Napoleon Engineering Department Napoleon, Ohio 43545 Phone: (419) 592-4010 Fax: (419) 599-8393	 Plans Prepared By: City of Napoleon Engineering Department Chad E. Luffs, P.E., P.S. Director Of Public Works				
No.	Date	Revision	Chgd. By		